

Your email @ CCC



Welcome to myAccount

Creating a CCC account will give you access to:

- CougarTrax
- Your CCC email account
- Free WiFi access on campus (coming soon!)
- myClackamas portal site (coming soon!)

What would you like to do?

Create/Change CCC Account

Why create a CCC email account?

- Connect to campus WiFi
- Easy CougarTrax access
- Get important CCC information
- Network with friends, classmates & faculty

What do I need to do?

- Go to: www.clackamas.edu/myaccount
- Read the information and then click on "New Account."
- Read each screen carefully & follow the directions.

How do I access my email account after creating it?

- Go to mail.live.com and log in using your newly created email address and password.

What if I need help?

- For technical assistance, email: StudentHelpDesk@clackamas.edu
- Call 503-594-3100 from any phone or ext. 3100 from any campus phone.
- Stop by room 104 in Barlow Hall 9am-noon and 6-8pm, Monday-Thursday.
- Complete an online Help Desk Request at: <http://Students.Clackamas.edu/HelpDesk>

How do I log into CougarTrax?

- Once you've created a username & password, this will now be your User ID & password for CougarTrax, too.
- If your email address is:
JohnDoe@student.clackamas.edu
Your CougarTrax User ID is: *JohnDoe*

Note: Your password is the same for both your email and CougarTrax account.

Protect yourself & your information.

Do not give your password to anyone, and log out of your account when finished.



Cougar Alert!



cougartrax

[Log In](#)

[Main Menu](#)

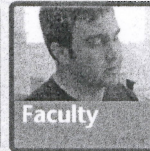
[Contact Us](#)



Prospective Students



Current Students



Faculty



Continuing Education



Staff

CougarTrax.clackamas.edu

Your Gateway to...

- **Registration**
- **Financial aid award letters**
- **Grades**
- **and much more**

To Access your CougarTrax Account:

- 1. Enter your User Name in the User Name field:**
This is a small "c" in front of your CCC Student ID Number (i.e. c0123456)
- 2. Enter a password:** your password is initially set as your six digit date of birth (mmddyy). You will be required to create a new password upon first logging in.
- 3. Protect your records.** Do not give your password or ID Number out to anyone.

See the reverse side for instructions for creating a CCC student email address. This will make accessing CougarTrax a lot easier!

Please Note: When using "CougarTrax," all enrollment policies and procedures with regard to dates for adding/dropping, holds, prerequisites, instructor consent, etc., apply.

For assistance, call the Registrar's Office at 503-657-6958 ext. 2262.



CLACKAMAS
COMMUNITY COLLEGE